



EXPION 360



*Industry Leader in
Lithium Battery Power Solutions*



NASDAQ: XPON
Corporate Presentation

July 2026

Important Cautions & Disclaimers

Certain statements contained in this presentation (this "Presentation") are forward-looking statements within the meaning of Section 27A of the Securities Act of 1933, as amended, and Section 21E of the Securities Exchange Act of 1934, as amended, which statements are subject to considerable risks and uncertainties. Expion360, Inc. (the "Company") intends such statements to be covered by the safe harbor provisions for forward-looking statements contained in the Private Securities Litigation Reform Act of 1995. Forward-looking statements include all statements other than statements of historical fact, including, without limitation, statements regarding the Company's beliefs, plans and expectations about the Company's operations, future development plans, growth prospects, product pipeline and development, anticipated timing of commercial launches, the Company's revenue guidance and its ability to achieve its outlook, beliefs about market size and opportunity, including customer base, market conditions, and factors beyond the Company's control. These statements are not guarantees of future performance and involve a number of known and unknown risks and uncertainties, many of which are beyond our control. Our actual results may differ materially from those expressed or implied by such forward-looking statements. Forward-looking statements contained in this Presentation regarding past trends or activities should not be taken as a representation that such trends or activities will continue in the future. The Company and its affiliates expressly disclaim any obligation to update or revise any forward-looking statements, whether as a result of new information, future events or otherwise. You should not place undue reliance on forward-looking statements, which speak only as of the date of this Presentation.

Certain information contained in this Presentation relates to, or is based on, studies, publications, surveys and other data obtained from third-party sources and the Company's own internal estimates and research. While the Company believes these third-party sources to be reliable, it has not independently verified, and makes no representation as to the adequacy, fairness, accuracy or completeness of, any information obtained from third-party sources. In addition, all of the market data included in this presentation involves a number of assumptions and limitations, and there can be no guarantee as to the accuracy or reliability of such assumptions. Finally, while the Company believes its own estimates and research are reliable, such estimates and research have not been verified by any independent source.

This Presentation is not intended for any commercial purpose but strictly for educational or informational purposes only. Please note that some photographs and images appearing in this presentation are not necessarily those of the Company or accurate representations of its products or operations, but may be stock images, third-party operations, product mock-ups, and/or may have been edited for competitive or confidentiality reasons. All third-party images are used for non-commercial, illustrative and educational 'fair use' purposes only. All images and trademarks remain the property of their respective owners.



EXPION360
NASDAQ:XPON

Corporate Video



INVESTING IN A LITHIUM BATTERY

[Video link will open in web browser](#)



EXPION360
NASDAQ:XPON

Corporate Overview

Expion360 is an industry leader of premium lithium iron phosphate (LiFePO₄) batteries and accessories for recreational vehicles, marine applications, and commercial markets.

- Experts in design and integration of battery power components and finished products.
- Leveraging established experience in the RV and marine markets to expand into industrial and construction markets, as well as surveillance and remote power applications requiring reliable off-grid energy solutions.
- Lithium batteries offer significant advantages over lead acid in cost, size, capacity, and longevity, and alongside rapid solar adoption, are driving a generational shift in energy storage.
- LiFePO₄ chemistry delivers 4,000+ cycles versus 500 for lead acid, 100% usable depth of discharge versus 50%, and is inherently non-flammable.
- Strategic battery supplier for RV OEMs with multiple channels and points of distribution.
- Differentiated patented and proprietary technology creates strong defensible position.
 - SmartTalk™ Bluetooth monitoring, VHC™ Vertical Heat Conduction for cold-weather charging, solid brass terminals, and UL 1973 compliance.
- Management team and board are experienced across engineering, technology, and finance.

NASDAQ: **XPON**

Stock Price ¹	\$0.45
Market Cap ¹	\$5.1M
TTM Revenue ²	\$9.2M
Shares Outstanding ³	11.4M
Public Float ^{3,4} est.	11.1M
Insider Holdings ^{3,4,5,6} est.	3%
Founded	2016

1) As of July 6, 2026

2) As of March 31, 2026

3) As of May 14, based on May 15, 2026 10-Q filing

4) Public float = free trading (unrestricted) shares

5) Fully diluted

6) Includes unvested shares



EXPION360
NASDAQ:XPON

Battery Portfolio Evolution

Strategic Positioning in Established Premium Markets

LiFePO4 Batteries Power:

Recreational Vehicle & Overland

Systems and appliances replacing noisy generators for off-grid power and charged by engine or solar



Boating & Marine

Trolling motors and operating cabin electronics



Light Electric Vehicle

Golf carts with sufficient power and reliability



Industrial & Construction

Construction job sites, surveillance & remote monitoring, and off-grid storage systems



Security & Surveillance

Reliable Backup Power for Security Remote Monitoring, and Surveillance Systems



Established

We have 11 patents pending across our four market segments.



EXPION360
NASDAQ:XPON

RV, Overland & Marine Markets

Market Drivers

- Growing interest in outdoors activities, watersports and camping
- Demand for overland vehicles and van conversions “van-lifers” driving growth of smaller vehicles that depend on batteries to power systems
- Transition to lithium from lead acid driven by demand from new technologies

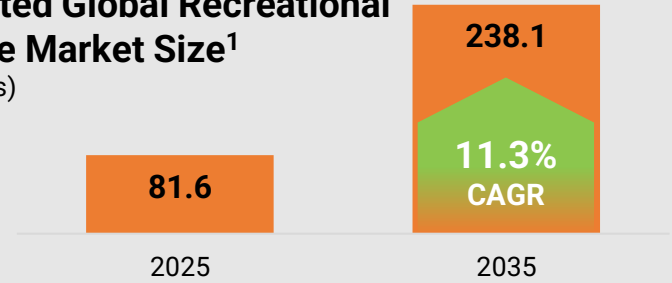
Vehicle Systems Drivers

- Electrical power systems are transitioning from diesel and propane generators to solar – requiring additional battery storage capacity
- In tandem, internal appliances including induction stoves and refrigerators moving from fossil fuels to electric

Driven by its proprietary technology, Expion360 is positioned to grow faster than the broader lithium-ion battery market.

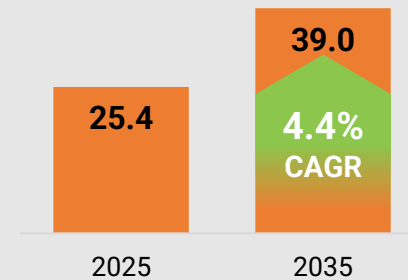
Projected Global Recreational Vehicle Market Size¹

(\$ Billions)



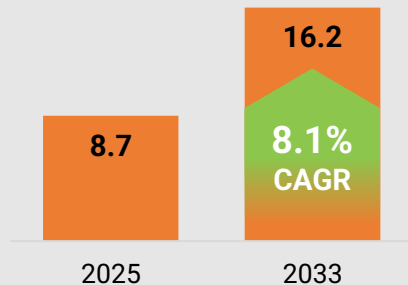
Projected Global Off-Road Vehicle Market²

(\$ Trillions)



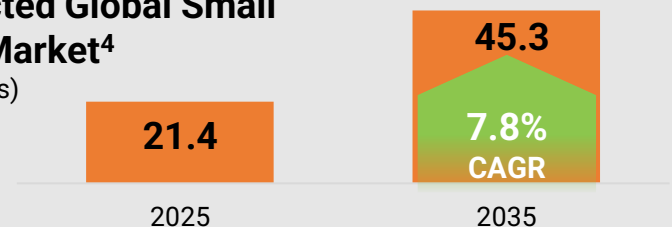
Projected Global Van Conversion Market³

(\$ Billions)



Projected Global Small Boat Market⁴

(\$ Billions)



1) [Precedence Research](#) 2) [Precedence Research](#) 3) [Cognitive Market Research](#) 4) [Future Market Insights](#)



EXPION360
NASDAQ:XPON

Light Electric Vehicle

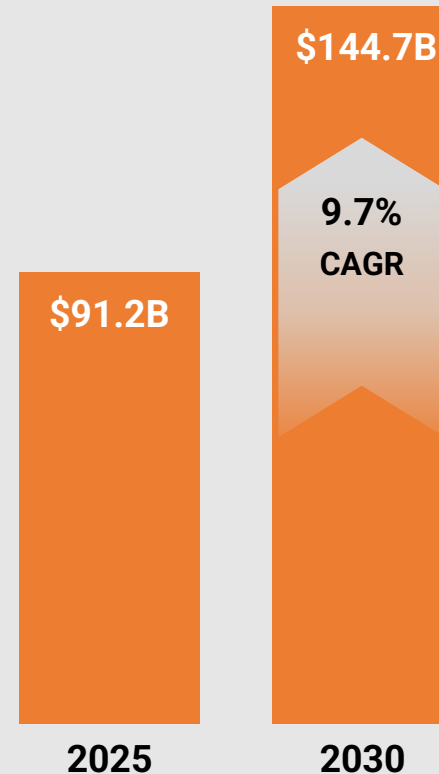
Global light electric vehicle market growing at **9.7% CAGR to reach \$144.7 billion by 2030.**¹

Global golf cart battery market growing at **12.8% CAGR to \$2.1 billion by 2035.**²

- Key market drivers:
 - Efforts to reduce emissions
 - Rising popularity of lithium-ion batteries compared to lead acid and AGM due to range, weight, charge time and lower overall costs

Light Electric Vehicle Market

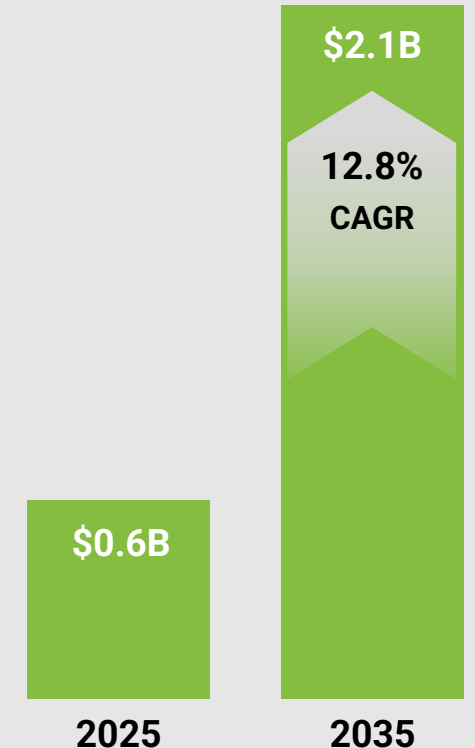
Global, USD Billions¹



1) The Business Research Company Light Electric Vehicles Market Report, Jan 2026

Golf Cart Batteries Market Segment

Global, USD Millions²



2) Global Market Insights Golf Cart Battery Market Size & Share, May 2026



EXPION360
NASDAQ:XPON

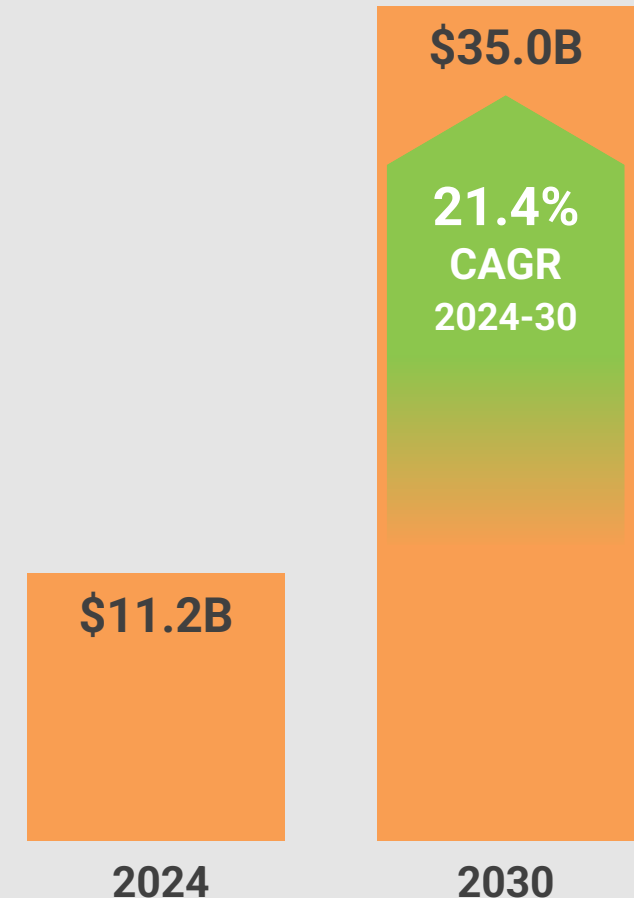
Industrial Battery Market

Key Market Drivers

- Rapid shift away from diesel generators on construction job sites driven by fuel cost, noise, and emissions reduction mandates
- Accelerating electrification of forklifts, material handling equipment, and industrial machinery replacing lead-acid systems
- Growing demand for reliable off-grid power in surveillance, remote monitoring, and mission-critical applications
- CAN Bus and smart integration enabling total cost of ownership advantages vs. traditional power solutions
- LiFePO4 chemistry: superior safety, 3,000–5,000 cycles at deep discharge depths, and 50% weight savings vs. lead acid make it the preferred industrial choice

Global Industrial Energy Storage Market¹

\$ billions



1) IMARC Group, Global Industrial Energy Storage Market, 2025



Future Market Expansion

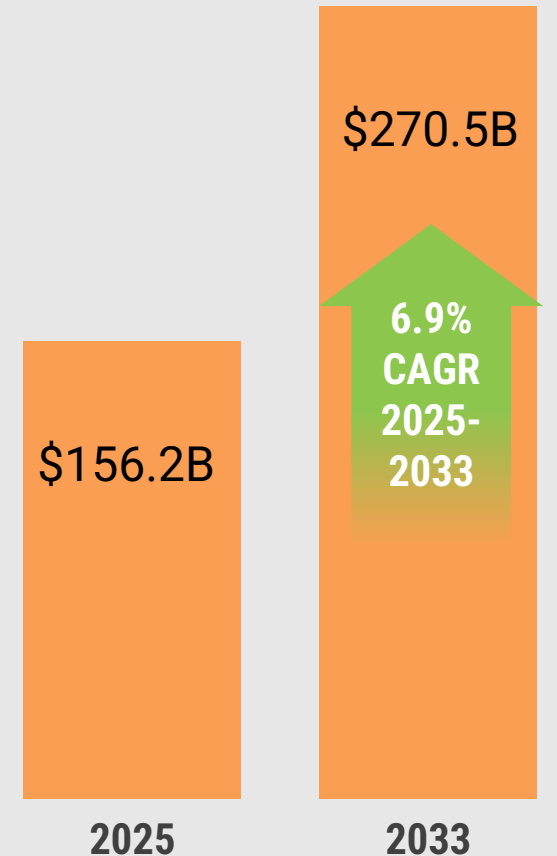
Security & Surveillance

EXPION360
NASDAQ:XPON

- We aim to provide additional capacities to the ever-expanding Security & Surveillance markets.
- **Global Security & Surveillance market** to grow at 6.9% CAGR to ~\$270.5 billion by 2033.¹
- **The security market is expanding rapidly** as organizations face an increasingly complex threat driven by cyberattacks, data breaches, physical security risks, and geopolitical uncertainties.¹



Global Security & Surveillance Market¹
\$ billions



1) Grand View Research, June 2026.



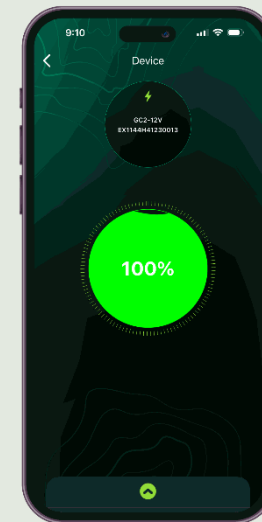
EXPION360
NASDAQ:XPON

Technology Advantages

- **Overall:** compact, high-capacity and significant reliability
- **Lithium-Iron Phosphate Chemistry:** recognized as among the safest battery chemistries
- **2-3 Times Faster Charging:** enables users to rapidly charge to capacity compared to lead acid batteries
- **Higher Energy Density:** provides 50% more usable energy compared to lead acid batteries
- **50% Lighter** than lead acid batteries
- **Innovative Mobile App** enables seamless integration to wirelessly monitor performance and view analytics
- **User-Centric:** flexible, modular, and designed for ease of placement and integration
- **Extended Lifespan:** ~12+ years; 3K-5K charging cycles. 10x more life cycles than lead acid batteries



e360 12 volt 450 Ah battery features new proprietary anode/cathode design that increases energy density by >32% to reach 4.5 Ah vs. traditional 3.4 Ah 26650 cells while maintaining similar cost, weight, and size of traditional cells.



e360 SmartTalk allows you to wirelessly monitor performance and view analytics on virtually any bluetooth-enabled mobile device.

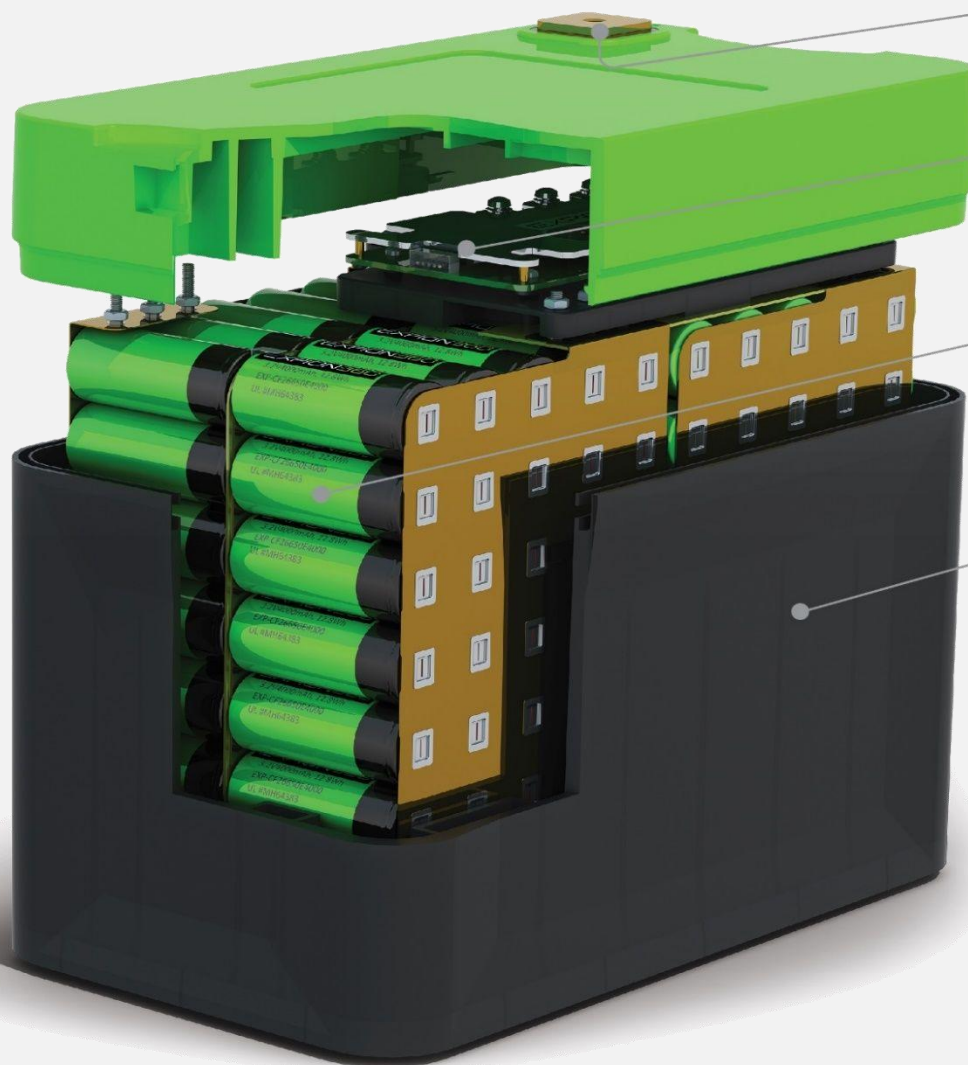


EXPION360
NASDAQ:XPON

Why Customers Choose E360

Superior Aesthetics, Design, Materials & Construction

- Rugged Design: IP66-rated enclosures for protection in variety of environments. Easy placement and integration.
- Fiber Glass Infused ABS Plastic for Enhanced Strength
- UL-94 V0 FIRE RATED
- IP66 Dust and Water Ingress Protection Rating
- E360 (12V/360Ah) has 3.5x the Capacity of Average RV Battery and a Unique Form Factor
- Long Warranties: Up to 12 years



QUALITY CONNECTIONS

- Oversized brass terminal pads.
- Plainly and permanently marked polarity.

HIGH-PERFORMANCE BATTERY MANAGEMENT SYSTEM

- Under or overvoltage shutdown.
- Under or overtemperature shutdown.
- Short circuit protection.
- Auto-reset.

SAFE BATTERY CONSTRUCTION

- Top-quality cells welded to thick solid-copper distribution plate.
- All terminals are epoxy sealed.
- TEi listed battery (UL 1973).
- UL recognized cells (UL 1642) - file No. MH64383.

RUGGED CASE

- UL 94 V-0 rated fiberglass-infused ABS case.
- Engineered insulation.
- Custom, no-slip, tie-down points.
- Round corners add strength & absorb shock.
- Rubber feet prevent sliding & reduce vibration.

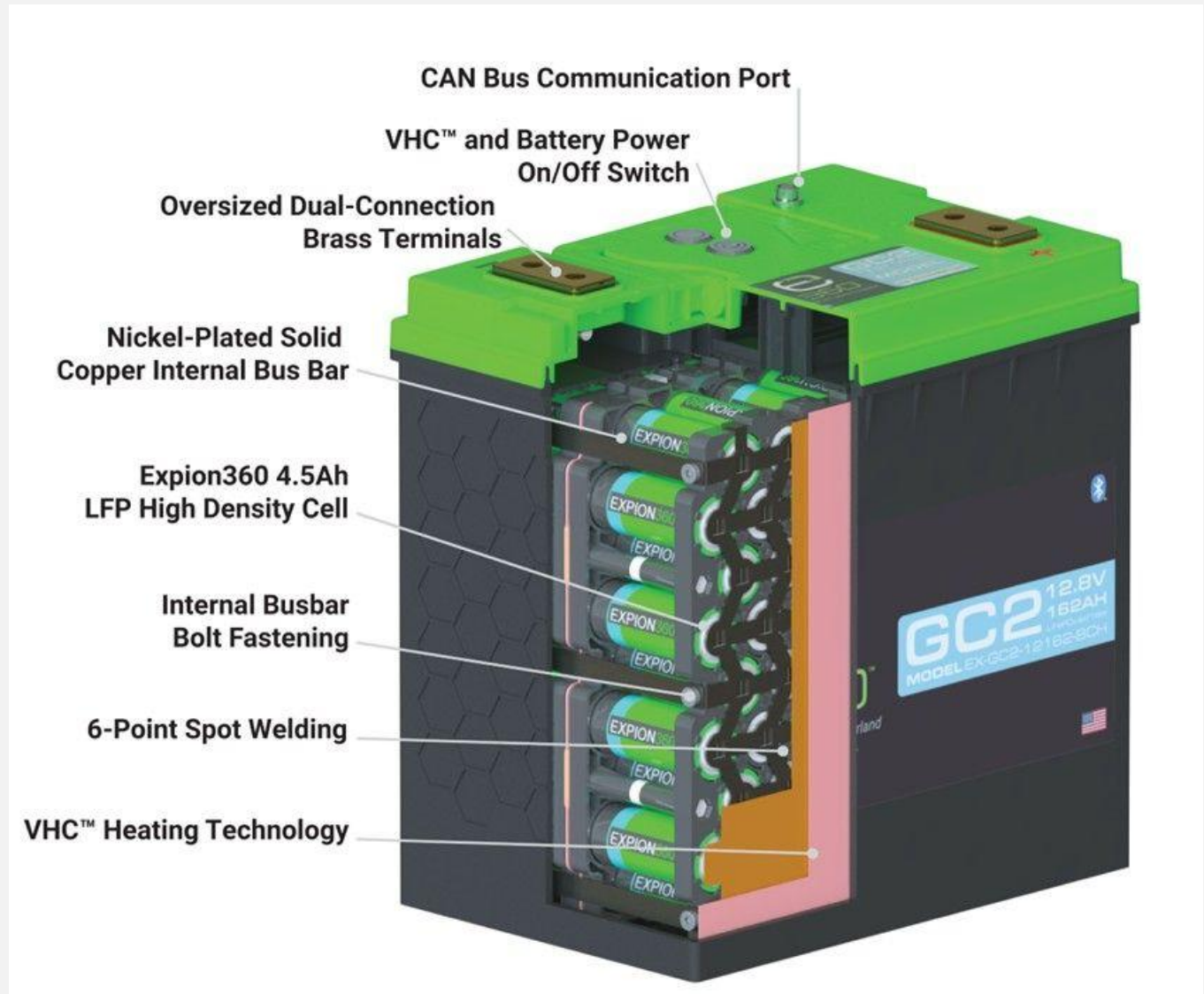


EXPION360
NASDAQ:XPON

Why Customers Choose E360

Vertical Heat Conduction™ (“VHC™”) internal heating technology

- Patent-pending innovation representing a significant breakthrough in battery performance, particularly in cold climates.
- Now included in the next generation Group 27, GC2 12V, and EX2 series batteries.
- VHC heating technology utilizes Positive Temperature Coefficient Heating Film (“PTCHF”) to ensure uniform heat distribution across each cell, promoting optimal battery performance even in extreme cold conditions.
- Expion360’s Battery Management System provides real-time monitoring and control, enhancing operational safety and longevity in cold temperatures.





EXPION360
NASDAQ:XPON

Product Line for Use Across Markets



12V Group 24

60Ah, 80Ah, 95Ah



**12V Group 27
LiFePO4**

100Ah, 120Ah



**12V Group 27
SmartTalk™ & VHC™**

100Ah, 132Ah



**12V GC2
SmartTalk™ & VHC™**

162Ah



**48V GC2
SmartTalk™**

36Ah



12V EX1

368Ah



12V EX1 SmartTalk™

368Ah, 450Ah



**12V EX2 Edge SmartTalk™
& VHC™**

240Ah



**48V EX2 Edge SmartTalk™
& VHC™**

60Ah



**AURA Powercap 600W
Inverter Bundle**

60Ah, 80Ah, 95Ah

Plus: Power Bundles, Mounting Kits, Adapter Cables, Inverters, Battery Monitor Kits, Chargers and Thermal Jackets



EXPION360
NASDAQ:XPON

Expion360 vs. Competitors

Battery Features	Expion360	Lithium Competitors	Lead Acid Competitors
High-Current Cable Connections	Mechanical Connections: low electrical resistance for better power transfer	Soldered Connections – high electrical resistance, creating energy loss due to the high resistance	Soldered Connections – high electrical resistance, creating energy loss due to the high resistance
Power Collector Plates	Thicker, Higher Quality Plates: 0.4mm Solid Copper Plates	Thinner, Lower Quality Plates: 0.1mm Nickel Plated Tin Strip	-
Lithium Cell	Stainless Steel Encased Cylindrical Cell	Polymer or Prismatic Cell	-
Oversized Terminals	✓	-	-
Cell - UL 1642 Battery - UL 1973	✓	varies	-
Battery Management System CPU	Proprietary BMS controls safety and performance of the battery. Over voltage; Under Voltage; Short Circuit; Over Current; Under current; Low temperature; High Temperature; Cell Balancing & Charging/Discharging	A mix of off the shelf BMS and lower quality components	-
Simple to install	✓	-	✓
Highly Aesthetically Design	✓	-	-
Overall Size vs. Energy Density	Superior	Inferior	Inferior
Performance	4000 – 5000 cycles	3500 – 4000 cycles	200 – 1500 cycles
Weight	29 lbs for 100Ah battery	29-35 lbs for 100Ah battery	59 lbs for 100 Ah battery
Warranty	12 year warranty	3 to 10 year warranty	1 to 3 year warranty
Maintenance	No maintenance required	No maintenance required	Maintenance required



Go-to-Market Channels

EXPION360
NASDAQ:XPON



Dealer Direct

- Sell directly to dealers who offer Expion360 products to their customers
- 300+ dealers & growing



Distributors

- Our distributors provide us access to thousands of retail store locations nationwide
- Elevates brand awareness and opens the door to new applications



OEMs

- Offers customers a scalable integrated power system solutions for their products
- Highly scalable & reduced time-to-market



Private Label

- Our standardized products sold under client's existing brand
- Enables turnkey, fast time-to-market, and rapid brand expansion
- Scale compatibility

Expanding Reseller Network: **300+** Nationwide and Growing

Our Proprietary Products and Manufacturing Capabilities
are at the Foundation of Our Go-to-Market Strategy



FOREST RIVER

SCOUT





EXPION360
NASDAQ:XPON

Overland Growth Drivers

- Highly competitive on quality, price, form factor and power density.
- Selected as strategic supplier by multiple RV OEMs :
 - Forest River
 - Scout Campers
 - Four Wheel Campers
 - Chinook RV premium motorhomes
 - Imperial Outdoors overland RV camper series
 - Overland RV trailer branded & sold by a Top U.S. sports utility vehicle (SUV) manufacturer through 5,000 SUV dealerships nationwide
- Working to further grow and expand major OEM partnerships



Rugged power storage for new off-grid, extreme overland Imperial Outdoors RV camper series.



Storage for solar power, air conditioner and induction cooktop on Chinook RV premium motorhomes.

SCOUT



e360 batteries each camper built by Scout Campers.



e360 batteries are included in Forest River's Dynamax, East to West, Georgetown, and Dynamax Grand Sport brands.



EXPION360
NASDAQ:XPON

Expanding Industrial Product Line

LiFePO4 Lithium Battery

• Benefits of Expion's LiFePO4 Lithium Battery:

- **UL1973 and UL 1642 Compliant**
- **Superior Energy Density:** More power in a compact, lightweight form
- **Maximize ROI:** Eliminate diesel fuel and generator maintenance with 10x the life cycle of traditional lead-acid alternatives and rapid recharge and discharge efficiency
- **Modular Scalability:** Scale up your system as energy demands increase with compact, space-saving battery designs that are compatible with existing industrial power designs
- **Smart Battery Management System (BMS):** Protects from overcharging, overheating, and deep discharge
- **Robust Case Design:** Industry first rubber feet integration directly into the case, eliminating vibration and sliding with radiused corners for structural strength. Operates in harsh temperatures and environment
- **Superior Power Transfer:** Cells welded via thick copper machined collector plates, creating a mechanical backbone to reduce resistance and heat buildup. Terminal pads are ~97% larger than standard terminals.



Smart Battery Management System.



Robust case design.



Superior power transfer – copper machined collector plates.

UL 1973 & UL 1642 compliant. 10x cycle life vs. lead-acid. 99% discharge efficiency.
Modular & scalable. expion360.com/lifepo4



EXPION360
NASDAQ:XPON

Expanding Industrial Product Line

Applications of LiFePO4 Lithium Battery

• Off-Grid Surveillance and Security

- **Mobile Surveillance Units:** Solar-ready power for mobile surveillance trailers
- **Remote Security Systems:** Backup for remote off-grid CCTV
- **Law Enforcement and Military Use:** Power for rapid deployment and emergency response
- **Border & Site Security:** High-capacity energy for perimeter security Systems

• Construction and Remote Job Sites

- **Noise Reduction:** Silent, Emission-Free Power for Urban Noise Ordinances
- **Logistics and Fuel Costs:** Reduce reliance on propane and diesel generators, lowering operational expenses
- **Reliable Energy for Equipment and Tools:** High-discharge power for tools, lighting and site trailers

• Off-Grid Energy Storage Systems

- **Telecom and Data Relay:** Uninterrupted energy for cell towers and data relay
- **Disaster Recovery and Relief Operations:** Keep operations powered in remote locations
- **Remote Sensor Arrays & Industrial IoT Power:** Scientific research stations and mobile field officers



Solar-powered mobile surveillance trailer.



Law enforcement emergency response command vehicle.



High-discharge power for site lighting.



High-discharge power for tools.

UL 1973 & UL 1642 compliant. 10x cycle life vs. lead-acid. 99% discharge efficiency. Modular & scalable. expion360.com/industrial



EXPION360
NASDAQ:XPON

Industrial Market Expansion

DASGen Hybrid Energy Storage System

- February 2026 – Strategic partnership with **Dealer Accessory Supply (DAS)** marks **Expion360's** entry into the industrial market
- **DasGen Hybrid Energy Storage System**
 - Powered by Expion360 battery technology, designed to be an energy buffer between diesel generators and jobsite electrical loads on construction sites
 - Intended to store and deploy energy based on load requirements, allowing generators to operate fewer hours and at higher efficiency
 - Initial 25kW deployment: generator runtime decreased during evaluation period, resulting in lower diesel consumption
- **Partnership Structure**
 - **Expion360:** supplies LiFePO4 battery technology and leads all sales & marketing efforts
 - **Dealer Accessory Supply:** final system assembler providing integrated assembly and delivery
 - Preparing for wider deployment to construction firms nationwide





EXPION360
NASDAQ:XPON

First Quarter 2026 Financial Highlights

	Three Months Ended March 31		
\$ in millions	2026	2025	% Δ
Revenue	\$ 1.6	\$ 2.0	-24%
Gross profit	\$ 0.4	\$ 0.5	-24%
<i>Gross margin (%)</i>	25%	24%	
Selling, general and administrative expenses	\$ 2.2	\$ 1.6	+31%
Net income (loss)	\$ (1.8)	\$ (1.2)	+53%
	March 31, 2026	December 31, 2025	
\$ in millions			
Cash and cash equivalents	\$ 3.1	\$ 3.0	



EXPION360
NASDAQ:XPON

Senior Management Team

Joseph Hammer

CEO & Chairman

- 20+ years of experience as a veteran financial executive and experienced Board director.
- Chief Investing Officer at LHX Corp., a family office service company for a single family, since February 2025.
- Chief Investing Officer of LH Financial since 2010, sourcing potential investments for the family office.
- Chairman of the Board of Nasdaq-listed Trailblazer Merger Corporation I since 2023 and, since 2016, served as a member of the Board of Directors of Gratitude Railroad LLC.
- Founded The JDH Foundation, a 501(c)(3) charitable organization, in 2020 that supports local and international charitable causes.



Shawna Bowin

Chief Financial Officer

- 20+ years of progressive experience in accounting serving public and private companies overseeing all accounting operations, ensuring accurate financial reporting, maintaining compliance with legal and regulatory requirements, and supporting internal controls.
- Previously served as Controller of Expion360 from February 2025 to September 2025 and Senior Accountant from January 2022 to February 2025.
- Served as Accounting Manager at Hodge Western Corp. and served in accounting-related roles with JTS Animal Bedding and American Licorice Company



Carson Heagen

Chief Operating Officer

- 10+ years of leadership experience in operations, finance, global supply chain management, and ERP systems.
- Previously served as Interim COO of Expion360 from November 2024 to February 2025; Former Vice President of Operations at Expion360; promoted from Director of Finance within the same year.
- Holds a double B.B.A. in Business Administration and Management and Entrepreneurial Management from Boise State University.



EXPION360
NASDAQ:XPON

Key Takeaways

- **Focus on safety, quality, and service** is paying off – This is what we believe in.
- **We are expanding our presence in industrial and construction markets**, including the DASGen Hybrid Energy Storage System and three next-generation battery models planned for H2 2026.
- **Working to increase margins and reduce costs** within the current line of batteries.
- **Actively engaged with resources in Washington, D.C.** to reduce tariff impact.
- **Diversify our supply chain** with potential sourcing from additional countries.
- **We continue to work towards additional OEM** market penetration with new major partners.
- **Continue to add features, improve energy density and develop unique OEM-centric form factors.**



Contact Us

Expion360 Headquarters

2025 SW Deerhound Ave.

Redmond, OR 97756

Tel +1 (541)797-6714

Investor Relations Contact

Chris Tyson, Executive Vice President

MZ Group - MZ North America

949-491-8235

XPON@mzgroup.us

www.mzgroup.us



Appendix





EXPION360
NASDAQ:XPON

Expanding Reseller Network

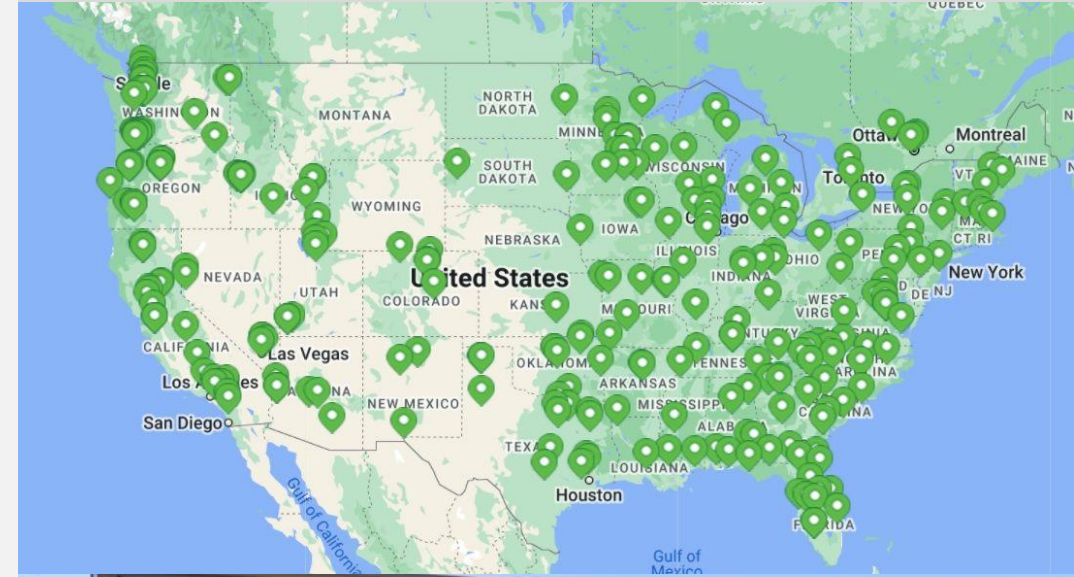
- **300+** nationwide and growing
- Dealers, wholesalers, and original equipment manufacturers
- Marquee customers include:

**CAMPING
WORLD**



An LKQ Company

Expion360 Nationwide Reseller Network





NASDAQ: XPON

Key Statistics

EXPION360
NASDAQ:XPON

mrq = Most Recent Quarter Ended March 31, 2026
ttm = Trailing Twelve Months Ended March 31, 2026

Stock Price <i>as of July 6, 2026</i>	\$0.45
Avg. Volume	137K
Shares Outstanding¹	11.4M
Market Cap.²	\$5.1M
Public Float^{1,3} est.	11.1M
Insider Holdings^{1,4,5} est.	3%
Employees²	21
Founded	2016
Fiscal Year End	Dec. 31

Revenue, <i>ttm</i>	\$9.2M
Revenue, <i>mrq</i>	\$1.6M
Gross Profit, <i>ttm</i>	\$1.2M
Net Loss, <i>ttm</i>	\$6.8M
Cash & cash equiv. <i>mrq</i>	\$3.1M
Total Assets <i>mrq</i>	\$7.5M
Total Debt <i>mrq</i>	\$0.2M
Total Liabilities <i>mrq</i>	\$1.5M
Working Capital <i>mrq</i>	\$5.6M



1) Based on May 15, 2026 10-K filing
2) As of July 6, 2026
3) Public float = free trading (unrestricted) shares
4) Fully diluted
5) Includes unvested shares

Data sources: Yahoo! Finance, Expion360 Form 10-Q for Period Ended March 31, 2026



EXPION360
NASDAQ:XPON

Future Onshore Production

Three Stages Toward Full Onshore Manufacturing

Stage 1

Design & Engineering in U.S.

(Current)

- Manufacturing partner in Asia handles component manufacturing, assembly and packaging.
- We assemble and distribute out of our Redmond, OR facility.
- Currently deploying IP strategies and cutting-edge research to design and develop new products.

Stage 2

Onshore Assembly to U.S.

(Plans for the Long-term Future)

- Design, engineer and assemble our battery systems in the U.S.
- Currently building out assembly capacity at corporate headquarters.
- Transition certain manual processes to automated.

Stage 3

Onshore All Production

(Plans for the Long-term Future)

- Engage manufacturing partners who require a reliable source of batteries for their products.
- Launch “mega factory” in partnership with these key player.
- Control all component manufacturing and assembly, including cell manufacturing.
- Enables better quality control and reduces supply chain risk.

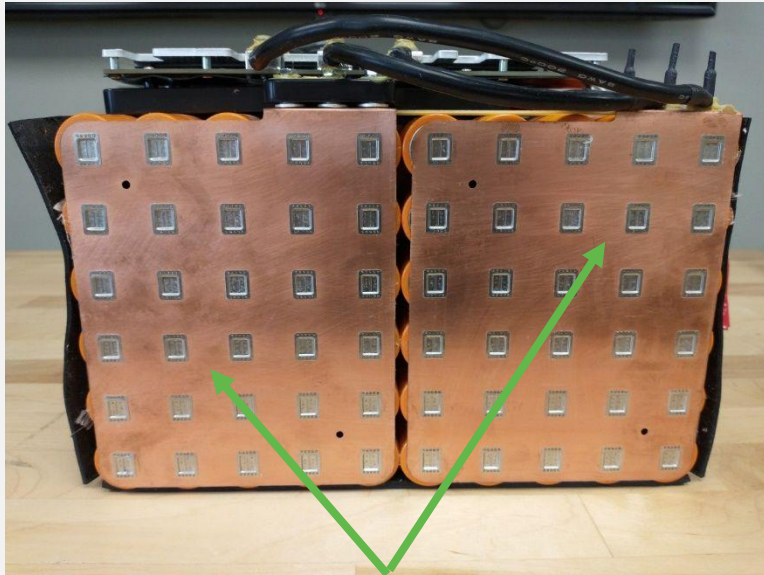


EXPION360
NASDAQ:XPON

How We Are Different

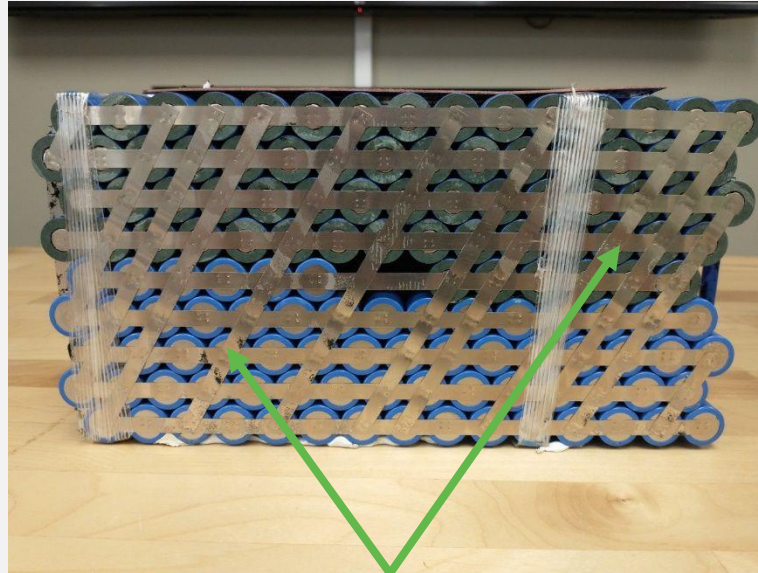
Power Collector Plates Comparison

EXPION360



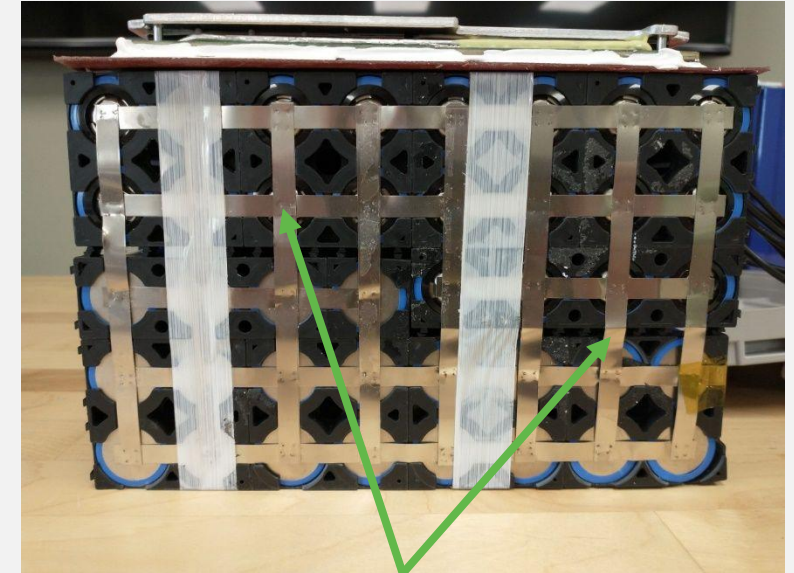
0.4 mm SOLID COPPER PLATES

COMPETITOR A



0.1 mm NICKEL PLATED TIN STRIP

COMPETITOR B



0.1 mm NICKEL PLATED TIN STRIP

- Expion360 **thick collector plates** are made of **copper**, a **better electrical conductor** compared to tin strips.
- Expion360 plates **greater surface area increases electrical efficiency**.
- Expion360 plates are **machine welded for a precise build**, whereas competitor batteries are typically hand-built.

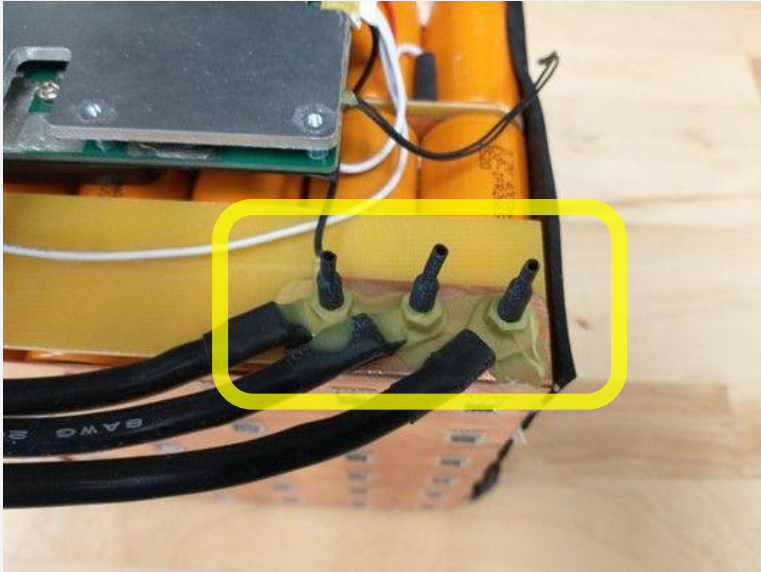


EXPION360
NASDAQ:XPON

How We Are Different

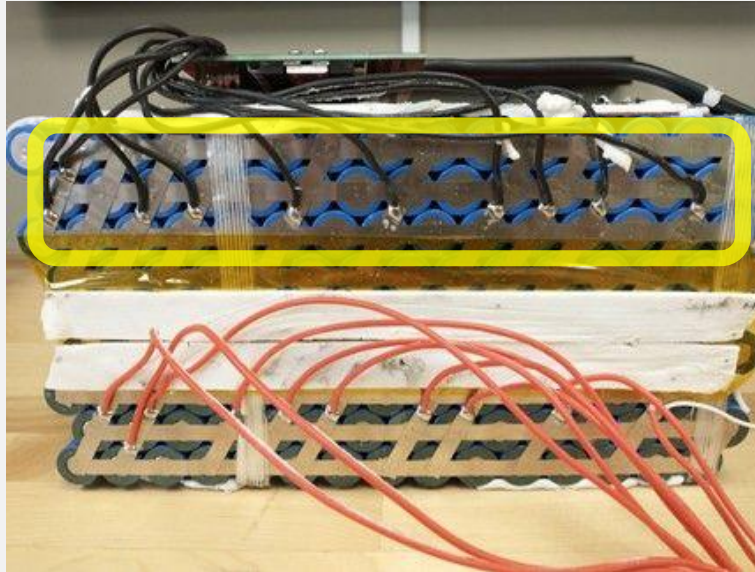
High Current Cable Connection Comparison

EXPION360



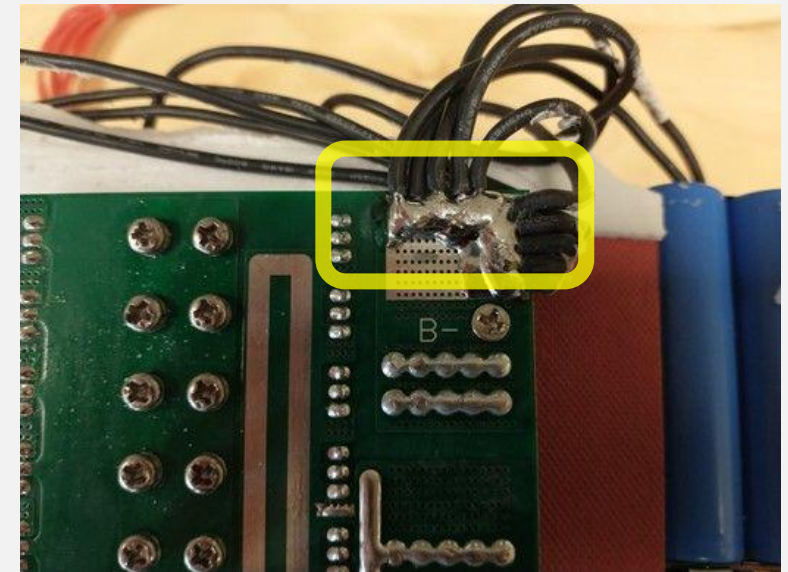
MECHANICAL CONNECTIONS

COMPETITOR A



SOLDERED CONNECTIONS

COMPETITOR B



SOLDERED CONNECTIONS

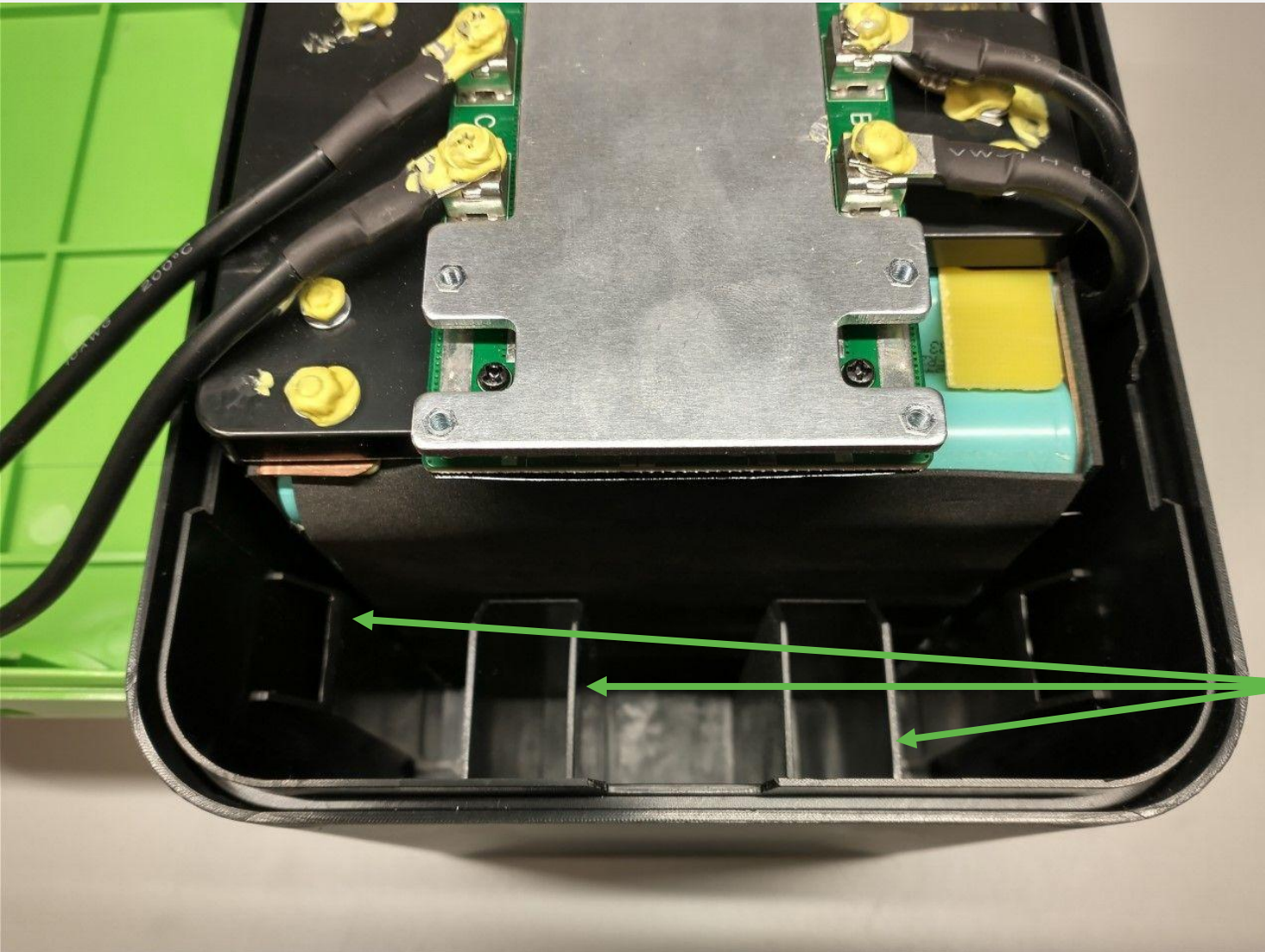
Expion360 cable connections are connected by a nut or stud (mechanical connections).

Mechanical connections are more efficient electrically and less prone to failure compared to soldered connections.



EXPION360
NASDAQ:XPON

How We Are Different Our Custom Battery Pack Cases



- Each case is designed for cell pack contained inside.
- Expion360 **owns the molds** used to create the battery cases making it unique to our product.
- **Support ribs on all sides** to fully cradle the cell pack to **prevent the battery from shifting** due to movement and vibration.
- Batteries can be **mounted in any direction**, with the exception of the 360 Ah model due to its larger internal pack size and weight.

Our Case is Designed Specifically for our Battery Pack



EXPION360
NASDAQ:XPON

How We Are Different We Provide 96% Larger Offset Terminals vs. Competitors



Large offset terminals to prevent cross polarization during installation and to make the batteries easier to connect during parallel and series banks.

PARALLEL BANK



SERIES BANK

